

# Quick Start Guide



## GV-Mobile NVR System

*The Vision of Security*



Thank you for purchasing GV-Mobile NVR System. This guide is designed to assist the new user in getting immediate results from the GV-Mobile NVR System. For advanced information on how to use the GV-Mobile NVR System, please refer to *GV-Mobile NVR System User's Manual* (GV-Desktop > **Program** button > **User Manual**).



**© 2015 GeoVision, Inc. All rights reserved.**

Under the copyright laws, this manual may not be copied, in whole or in part, without the written consent of GeoVision.

Every effort has been made to ensure that the information in this manual is accurate. GeoVision, Inc. makes no expressed or implied warranty of any kind and assumes no responsibility for errors or omissions. No liability is assumed for incidental or consequential damages arising from the use of the information or products contained herein. Features and specifications are subject to change without notice.

GeoVision, Inc.  
9F, No. 246, Sec. 1, Neihu Rd.,  
Neihu District, Taipei, Taiwan  
Tel: +886-2-8797-8377  
Fax: +886-2-8797-8335  
<http://www.geovision.com.tw>

Trademarks used in this manual: *GeoVision*, the *GeoVision* logo and *GV* series products are trademarks of GeoVision, Inc. *Windows* and *Windows XP* are registered trademarks of Microsoft Corporation.

July 2015

## Contents

<b>1. Introduction .....</b>	<b>1</b>
1.1 Packing List.....	1
1.2 Software License .....	2
1.3 Recommended Hard Disks .....	2
1.4 Options.....	3
1.5 Overview .....	4
1.5.1 Front View .....	4
1.5.2 Rear View .....	6
1.5.3 Wireless Antenna .....	8
<b>2. Getting Started .....</b>	<b>9</b>
2.1 Interface Connection .....	9
2.2 Turning on and off the Power .....	11
2.3 Installing the Storage Drive .....	14
2.3.1 GV-MNVR1000 System.....	14
2.3.2 GV-MNVR2100 System.....	15
2.4 Formatting the Storage Drive .....	16
2.5 Configure the IP Address.....	19
2.6 Exiting to Windows.....	22
<b>3. Accessing GV-Mobile NVR System.....</b>	<b>23</b>
3.1 Main Screen .....	23
3.1.1 Adding a Storage Drive to the Recording Path .....	24
3.1.2 Adding IP Cameras .....	25
3.1.3 Renaming the Camera .....	27
3.1.4 Choosing Recording Mode.....	27
3.2 Setting up a Recording Schedule .....	28
3.3 Playing Back Video .....	29
3.3.1 Playback Controls .....	30
3.4 Backing Up Video Files.....	30
3.4.1 Playing Backup Files .....	32
<b>4. System Restoration .....</b>	<b>33</b>

# 1. Introduction

Welcome to the *GV-Mobile NVR System Quick Start Guide*. In this quick guide, you will find information on the basic installation and configurations of the GV-Mobile NVR System. For detailed information, see *GV-Mobile NVR System User's Manual* (GV-Desktop > **Program** button > **User Manual**).

## 1.1 Packing List

1. GV-Mobile NVR System
2. 3-pin Terminal Block (for ACC Connection and DC In)



3. HDD screw x 4 (for GV-MNVR1000 System)
4. HDD screw x 8 (for GV-MNVR2100 System)
5. GPS Antenna
6. GV-NVR Dongle for third-party IP Camera Connection (Optional)
7. DVD (User's Manual and Quick Start Guide included)

## 1.2 Software License

<b>Free License</b>	24 / 32 channels from GV-IP Devices
<b>Maximum License</b>	24 / 32 channels from third-party IP devices
<b>Increment for Each License</b>	1 to 24 / 32 third-party IP cameras at an increment of 2
<b>Optional Combination</b>	N/A
<b>Dongle Type</b>	External

## 1.3 Recommended Hard Disks

GV-Mobile NVR supports up to 2 SATA HDD / SSD (2.5") with up to 2 TB capacities. For the optimal system performance, it is recommended to use the SSD (MLC or SLC) or the enterprise-level HDD, such as HGST Endurastar series and Toshiba automotive HDD.

## 1.4 Options

Optional devices can expand your GV-Mobile NVR System's capabilities and versatility. Contact your dealer for more information.

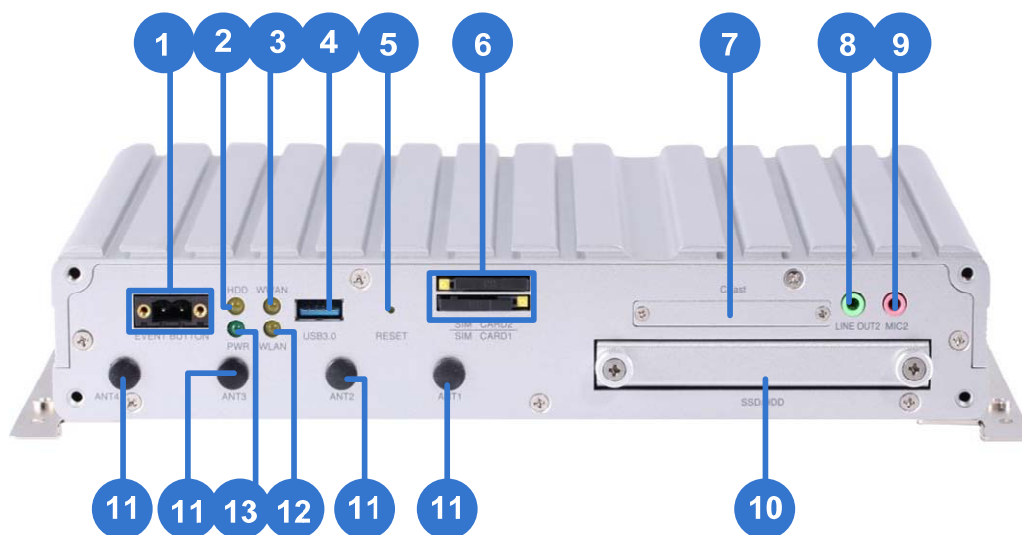
<b>GV-IO Box (4 Ports)</b>	GV-IO Box 4 provides 4 inputs and 4 relay outputs, and supports both DC and AC output voltages. A USB port is provided for PC connection.
<b>GV-IO Box (8 Ports)</b>	GV-IO Box 8 provides 8 inputs and 8 relay outputs, and supports both DC and AC output voltages. A USB port is provided for PC connection.
<b>GV-IO Box (16 Ports)</b>	GV-IO Box 16 provides 16 inputs and 16 relay outputs, and supports both DC and AC output voltages. A USB port is provided for PC connection.
<b>GV-Joystick V2</b>	GV-Joystick V2 facilitates the PTZ camera control. It can be either plugged into the GV-Mobile NVR System for independent use or connected to GV-Keyboard V3 to empower the operation.
<b>GV-Keyboard V3</b>	The GV-Keyboard V3 is designed to program and operate the system, and it can also be connected with PTZ cameras directly for PTZ control.
<b>GV-IR Remote Control</b>	Controls GV-Mobile NVR System with the Remote Control.
<b>GV-TouchDisplay133</b>	The GV-TouchDisplay133 is a 13.3-inch touch panel designed for GV-Mobile NVR System. With the touch panel, you can monitor live images and operate GV-NVR by simply touching the screen.
<b>Power Adapter</b>	Power adapters are available in 4 regions: U.S.A., Australia, U.K and Europe.
<b>3G / 4G Module</b>	The 3G or 4G module allows data exchange for the GV-Mobile NVR through the network connection covering wide area. It also empowers the application of GPS for the data transmission to the GV-GIS for real-time vehicle tracking.
<b>WiFi Module</b>	The WiFi module allows data exchange for the GV-Mobile NVR through wireless network connection within local area.

**Note:** The WiFi / 3G / 4G module will be built in the GV-Mobile NVR System and tested before shipment. Opening the case and installing the accessories yourself will void the warranty.

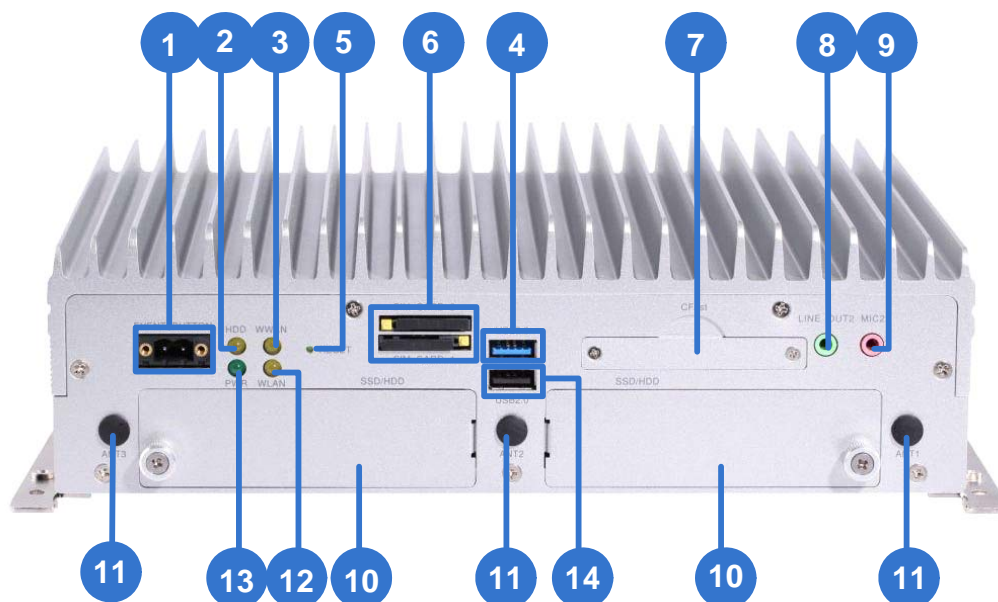
## 1.5 Overview

### 1.5.1 Front View

#### GV-MNVR1000 System



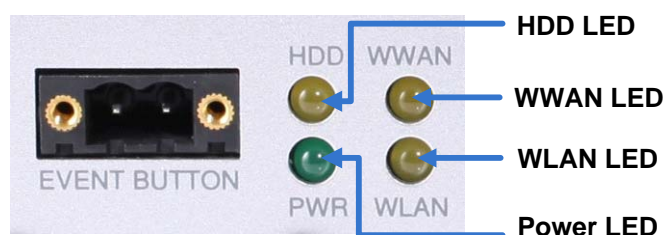
#### GV-MNVR2100 System



No.	Name	No.	Name
1	Event Button (Not Functional)	8	Audio Line Out Port
2	HDD Status LED	9	Audio Microphone In Port
3	WWAN LED	10	2.5" HDD/SSD Slot
4	USB 3.0 Port	11	Antenna Port
5	Reset Button	12	WLAN LED
6	SIM Card Slot	13	Power Status LED
7	CFast Card Slot	14	USB 2.0 Port

**Note:** The WLAN WiFi and WWAN 3G / 4G module are optional.

### Status Indicator LEDs

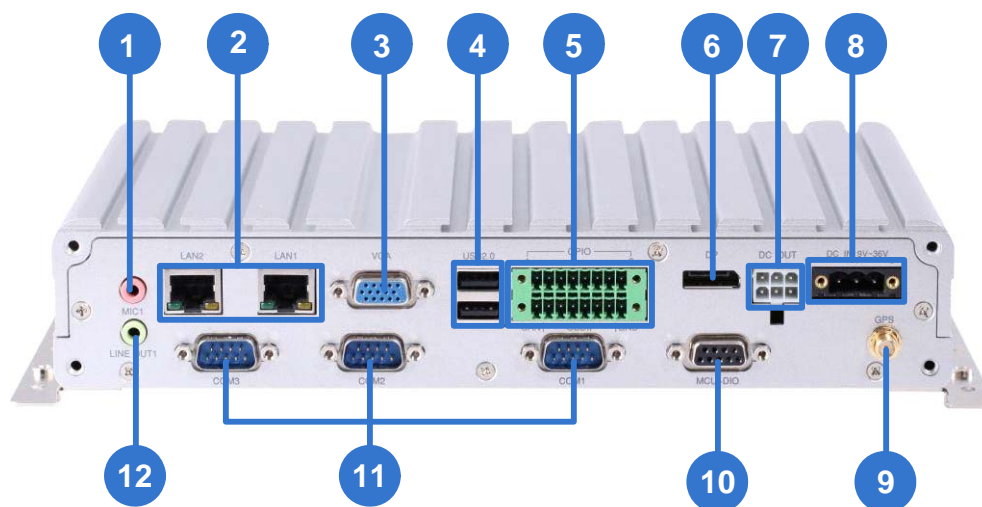


Indicator LED	Color	Description
HDD LED	Orange	Glow when HDD/SSD is active.
WWAN LED	Orange	Glow when WWAN is active.
WLAN LED	Orange	Glow when WLAN is active.
Power LED	Green	Glow when power is turned on.



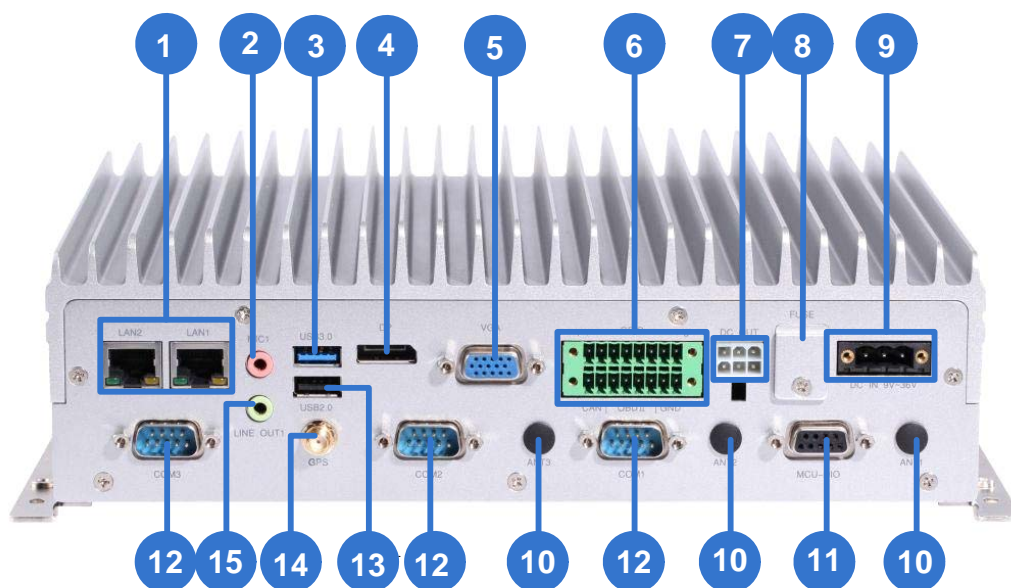
## 1.5.2 Rear View

### GV-MNVR1000 System



No.	Name	No.	Name
1	Audio Microphone In Port	7	DC Power Output (Not Functional)
2	Gigabit Ethernet Port x 2	8	DC 10 ~ 35V Power Input
3	VGA Output	9	GPS Antenna Port
4	USB 2.0 Port x 2	10	MCU DIO Port (Not Functional)
5	GPIO Terminal Block (Not Functional)	11	COM Port x 3
6	DisplayPort	12	Audio Line Out Port

## GV-MNVR2100 System



No.	Name	No.	Name
1	Gigabit Ethernet Port x 2	9	DC 10 ~ 35V Power Input
2	Audio Microphone In Port	10	Antenna Port x 3
3	USB 3.0 Port	11	MCU DIO Port (Not Functional)
4	DisplayPort	12	COM Port x 3
5	VGA Output	13	USB 2.0 Port
6	GPIO Terminal Block (Not Functional)	14	GPS Antenna Port
7	DC Power Output (Not Functional)	15	Audio Line Out Port
8	Fuse (15A)		

### 1.5.3 Wireless Antenna

An example of the GV-MNVR2100 System installed with WiFi, 3G / 4G and GPS antennas is shown as below.

For supported 3G / 4G frequency bands, see *Specifications*; for connection details, see *Optional Wireless Connection*, Chapter 4, *GV-Mobile NVR System User Manual*.

---

**Note:**

1. You can freely arrange and switch WiFi and 3G / 4G antennas in ports.
  2. GPS module is already built in the GV-Mobile NVR System. WiFi / 3G / 4G modules are optional.
  3. For GV-MNVR1000, see *GV-MNVR1000 System, 2.3 Wireless Antennas* in the *GV-Mobile NVR System User' Manual*.
- 

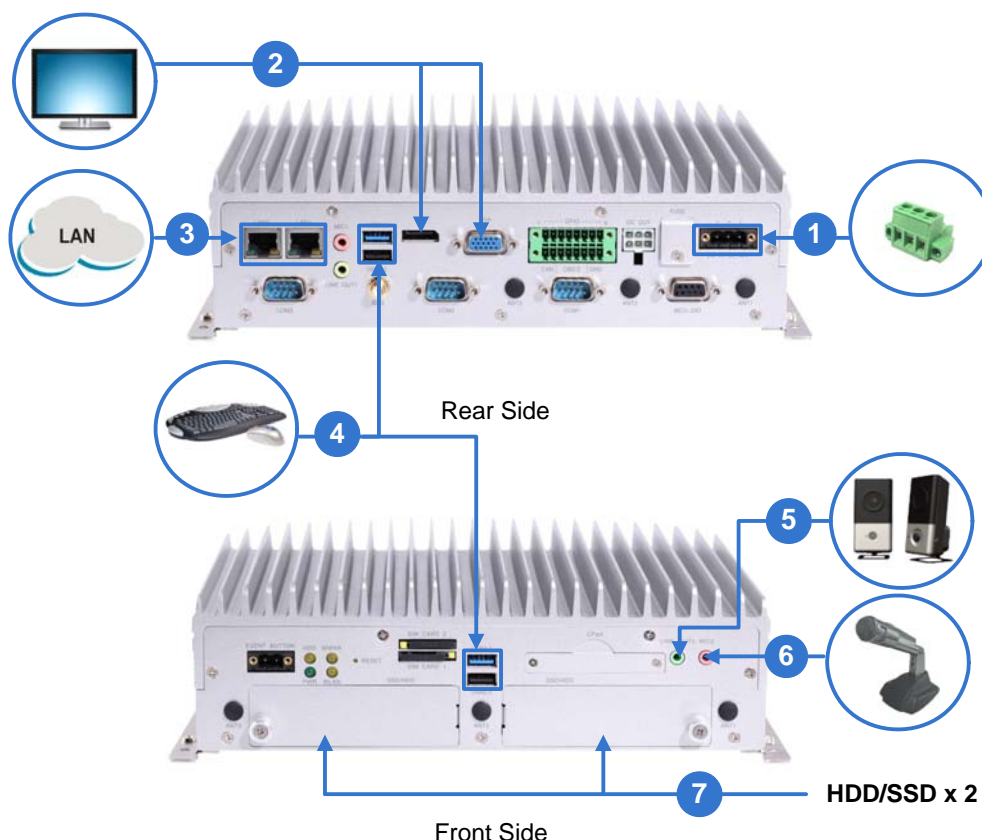


No.	Name
1	WiFi Antenna x 2
2	3G / 4G Antenna
3	GPS Antenna

## 2. Getting Started

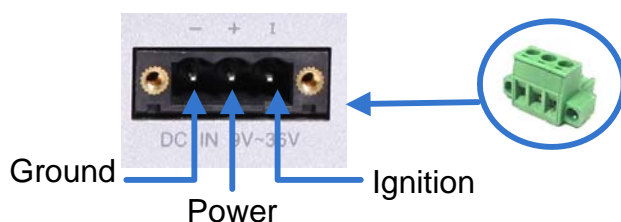
### 2.1 Interface Connection

This section describes the equipments required to operate the GV-Mobile NVR System. Here we use the GV-MNVR2100 System for example.



1. There are two options for connecting the power.

- A. Connect the GV-Mobile NVR System to the vehicle's power battery and ACC wire using the supplied 3-pin terminal block. The system will automatically start after you turn on the vehicle ignition. Power is supplied to the system as long as the vehicle ignition is on.



- B. Optionally purchase a power adapter from GeoVision. See *2.2 Turning on and off the Power*.
- 2. Use the VGA cable or the DisplayPort cable to connect the unit to the monitor.

**Note:** The GV-Mobile NVR System supports dual-monitor display. You can connect two monitors by using the VGA connector and DisplayPort.

- 3. Connect one end to the Gigabit Ethernet port and the other end to Network by using the RJ-45 cable.
- 4. Connect the keyboard and the mouse to the USB ports.
- 5. Connect the speaker to the Audio Line Out port.
- 6. Optionally connect the microphone to the Audio Microphone In port for two-way audio with IP cameras.
- 7. Insert the 2.5" HDDs or SSDs into the storage slots. For details, see *2.3 Installing the Storage Drive*.

After the unit is powered on, the Power Indicator LED shows constant green.

Before recording, you need to format the storage drive and add it to the recording path of the system. For formatting the storage drive, see *2.4 Formatting the Storage Drive*. For adding the storage drive to the recording path, see *3.1.1 Adding the Storage Drive to the Recording Path*.

## 2.2 Turning on and off the Power

The GV-Mobile NVR System is designed to connect to the vehicle's ACC wire. However, you can optionally purchase a power adapter (AC 100 ~ 240V) from GeoVision for power connection.

### 2.2.1 Connecting to the ACC Wire

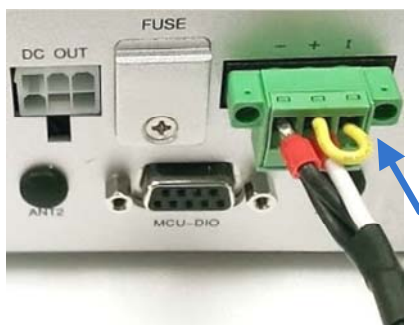
To turn on the GV-Mobile NVR System, connect the vehicle's ACC and power wires to the unit's power input using the supplied 3-pin terminal block. The system will automatically start after you power on the vehicle for 5 seconds.

After you power off the vehicle for 3 seconds, the system will turn off automatically.

### 2.2.2 Using the Power Adapter

To turn on and off the GV-Mobile NVR System using an optional power adapter from GeoVision, follow the steps below.

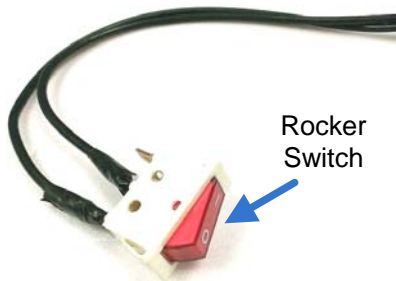
1. Plug the 3-pin terminal block connected with power adapter to the panel's power pins. The GV-Mobile NVR System will be powered on about 5 seconds later.



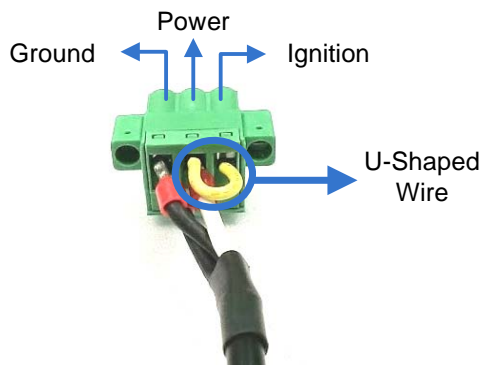
2. To turn off the GV-Mobile NVR System, shut down the system through the Windows desktop.

### Using Rocker Switch to Simulate ACC Ignition

For quick control of turning on or off the GV-Mobile NVR System, you can install a rocker switch to the 3-pin terminal block with the optional power adapter. For the connection and operation, follow the steps below.



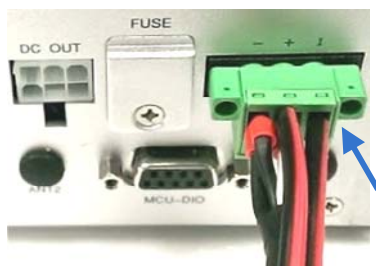
1. For the 3-pin terminal block with optional power adapter, unplug the U-shaped wire from the Power and Ignition pins.



2. Connect the wires of the rocker switch to the Power and Ignition pins respectively.



3. Plug the terminal block to the panel's power pins.



4. Press the rocker switch to turn on the GV-Mobile NVR System without operating on the Windows desktop. Once the rocker switch is on, the GV-Mobile NVR System will be powered on about 3 seconds later.
5. To turn off the GV-Mobile NVR System, press the rocker switch again.

**Note:** After the power is on, the GV-Mobile NVR System will run a series of self-tests, and a series of messages may be displayed as the various hardware and software subsystems are activated. After the process is finished, the GV-System Software (Multicam Surveillance System) should load automatically and bring you to the main screen.



## 2.3 Installing the Storage Drive

The GV-Mobile NVR System uses SATA hard drive / SSD for video data storage. Before recording, be sure to install the storage drive.

### 2.3.1 GV-MNVR1000 System

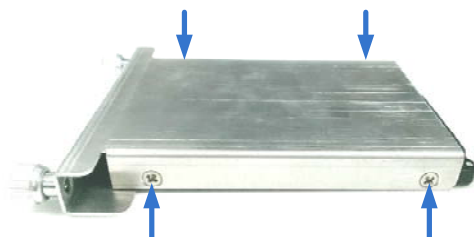
1. Loosen the thumb screws on the HDD/SSD slot and pull out the drive drawer.



2. Insert the storage drive into the drive drawer with the SATA data and power connector facing towards the end.



3. Secure the storage drive with the drive drawer using the supplied 4 screws.



**Note:** For convenience, it is suggested to secure the screws with the drive drawer being placed downward.

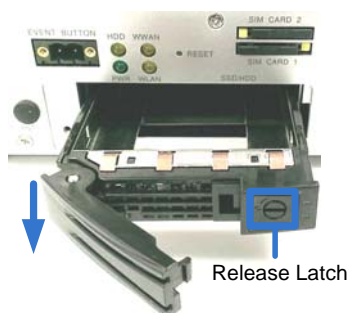
4. Insert the drive drawer into the HDD/SSD slot and secure the thumb screws.

## 2.3.2 GV-MNVR2100 System

1. Loosen the thumb screws on the HDD/SSD slots and remove the covers.



2. Press the release latch and pull out the drive drawer using the drawer handle that pops out.



3. Insert the storage drive into the drive drawer with the SATA data and power connector facing towards the end.



4. Secure the storage drive with the drive drawer using the supplied 4 screws.
5. Insert the drive drawer into the HDD/SSD slot, put the drawer handle back and rotate the release latch until it is vertical to lock the drive drawer.



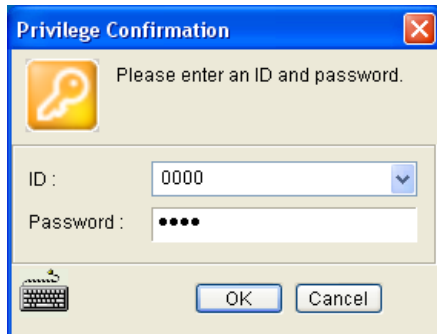
6. Put the cover back and secure the thumb screw.
7. Repeat the steps above to install the storage drive in the other HDD/SSD slot.

The HDD Status LED glows, and the storage drive is ready for use.

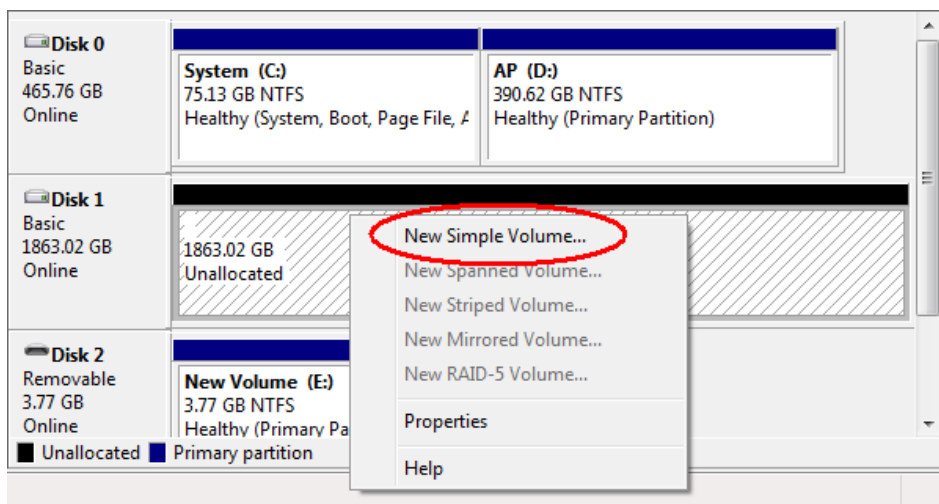
## 2.4 Formatting the Storage Drive

After installing HDD / SSD to your system, you will need to format the storage drive before recording.

1. On the GV-Desktop, click the **Programs** button, and select **Disk Management**.
2. Type the ID and password in the dialog box. The default ID and password are "0000".

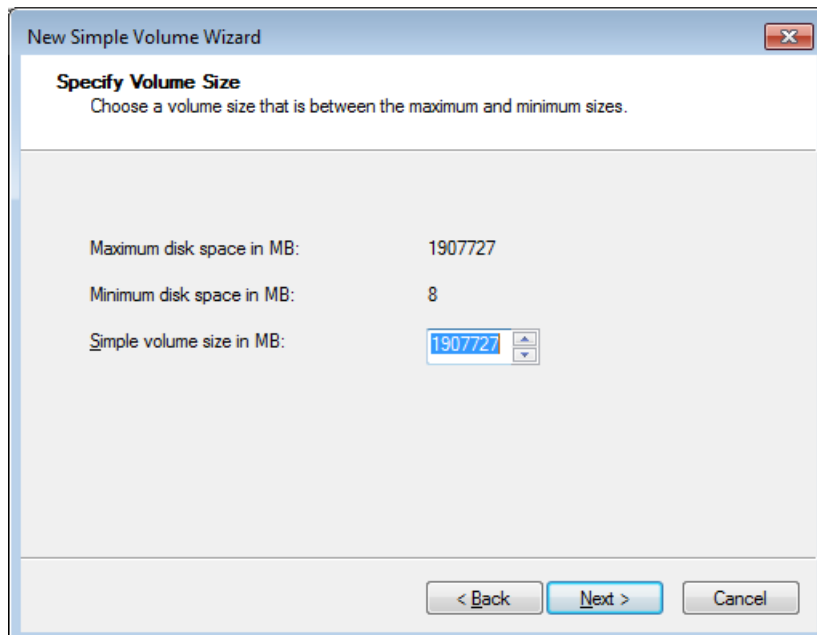


3. Right-click in the unallocated space of a new drive, and select **New Simple Volume**.



4. In the appeared New Simple Volume Wizard dialog box, click **Next** to continue.

5. The default partition size is the same as the maximum disk space. Make changes if necessary and click **Next** to continue.



**New Simple Volume Wizard**

**Specify Volume Size**  
Choose a volume size that is between the maximum and minimum sizes.

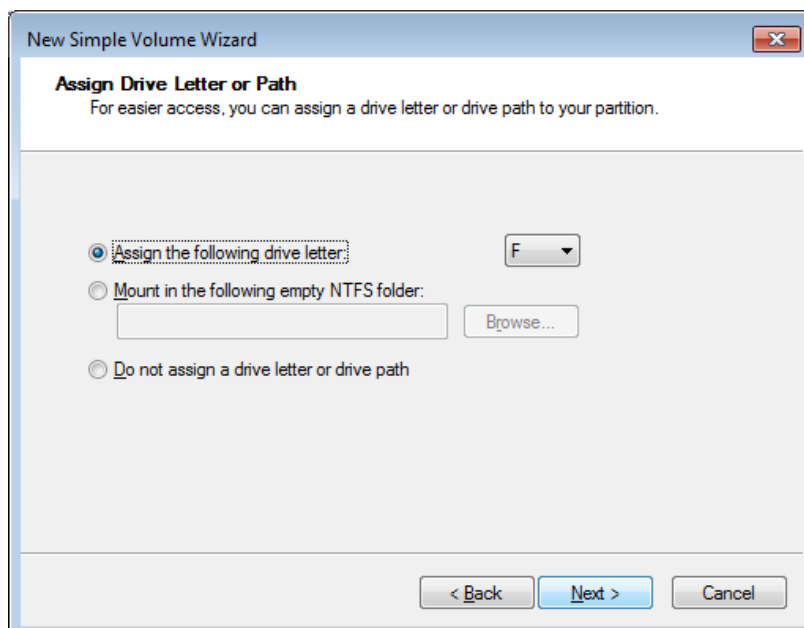
Maximum disk space in MB: 1907727

Minimum disk space in MB: 8

Simple volume size in MB: 1907727

< Back   Next >   Cancel

6. Assign a drive path that is not in use by other devices and click **Next** to continue.



**New Simple Volume Wizard**

**Assign Drive Letter or Path**  
For easier access, you can assign a drive letter or drive path to your partition.

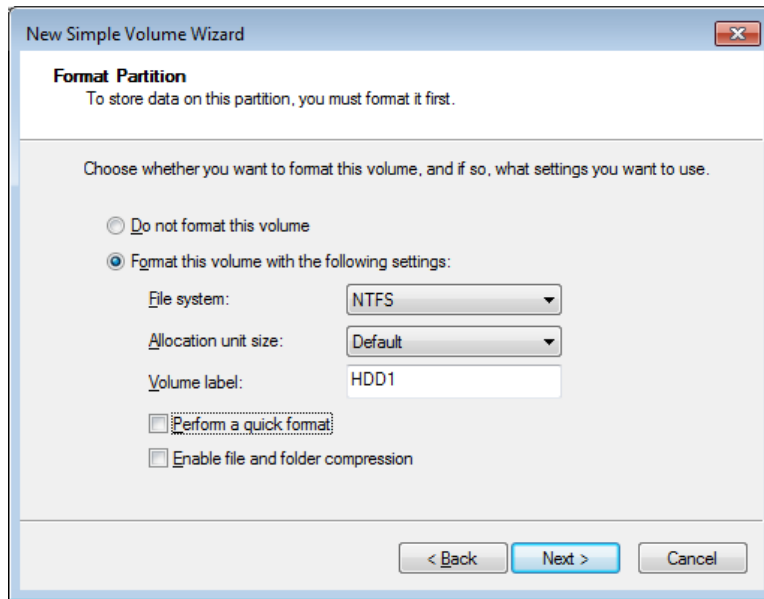
☒ Assign the following drive letter: F

☐ Mount in the following empty NTFS folder:  Browse...

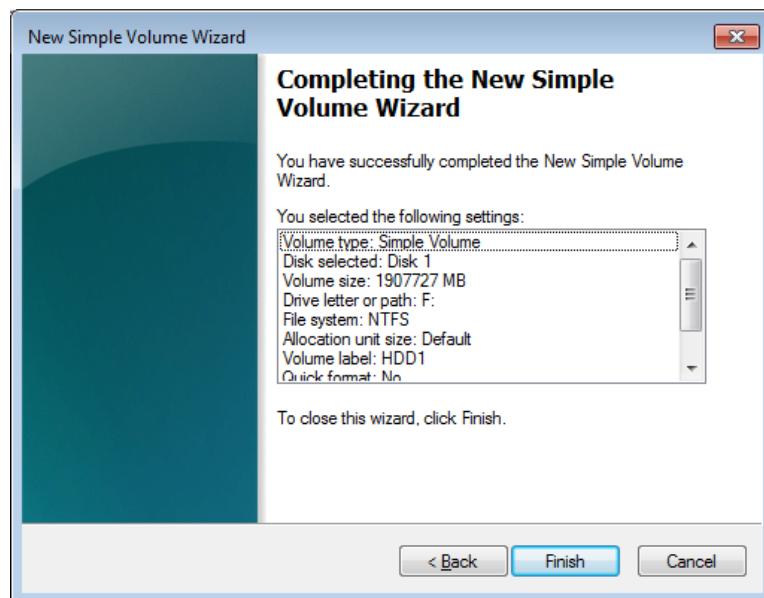
☐ Do not assign a drive letter or drive path

< Back   Next >   Cancel

7. Type a name in the **Volume label** box, ex. HDD1, and click **Next** to continue.



8. When the formatting is complete, click **Finish** to close the wizard.



## 2.5 Configure the IP Address

GV-Mobile NVR System supports remote monitoring, control and configuration over a network connection. The following default IP addresses will automatically be assigned.

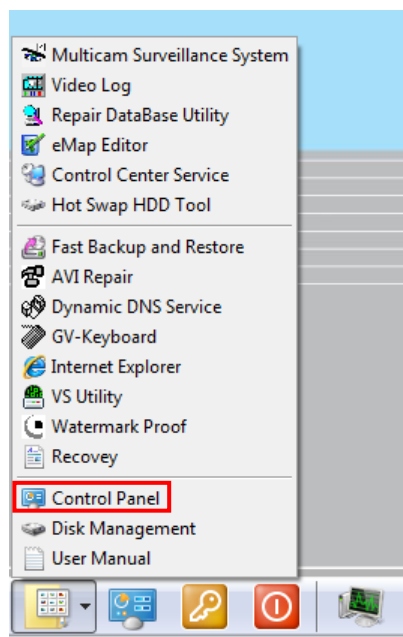
- **Connection 1: 192.168.0.200**
- **Connection 2: 192.168.0.201**
- **Default Subnet Mask: 255.255.252.0**

The local area connections listed correspond to the Ethernet ports as shown below:



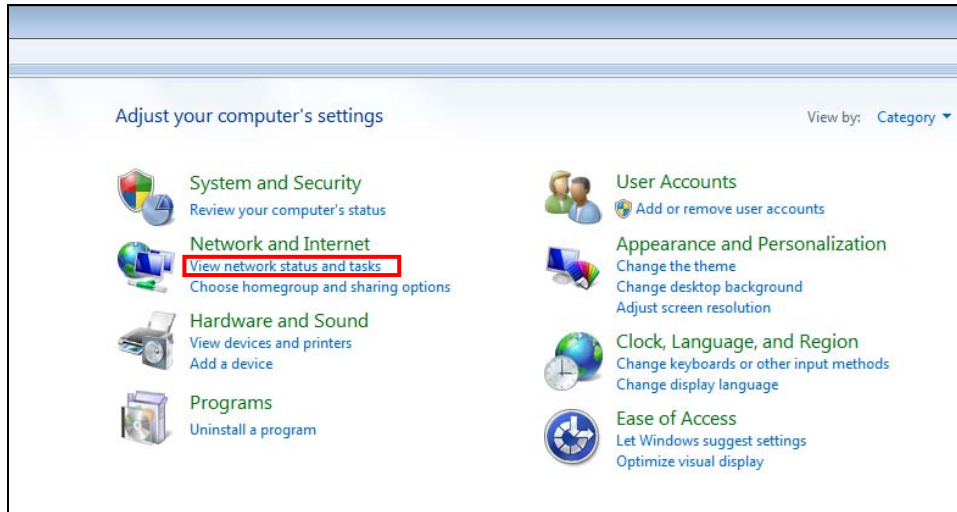
To change the above default IP addresses, follow the steps below.

1. On the GV-Desktop, click the **Programs** button, and select **Control Panel**.

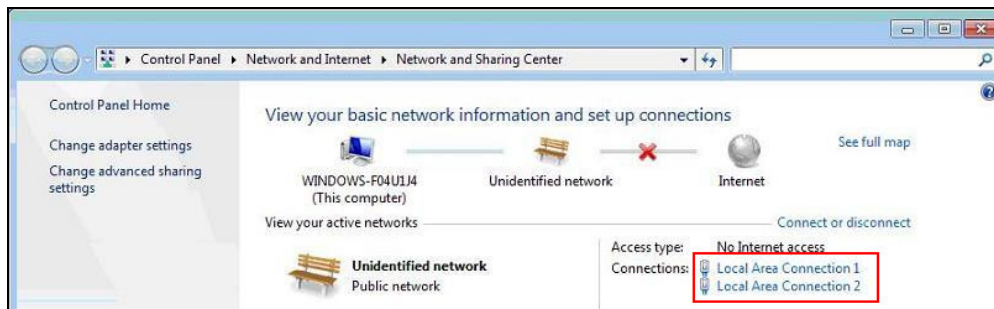


2. Type the ID and password. The default ID and password are **"0000"**. The Control Panel window appears.

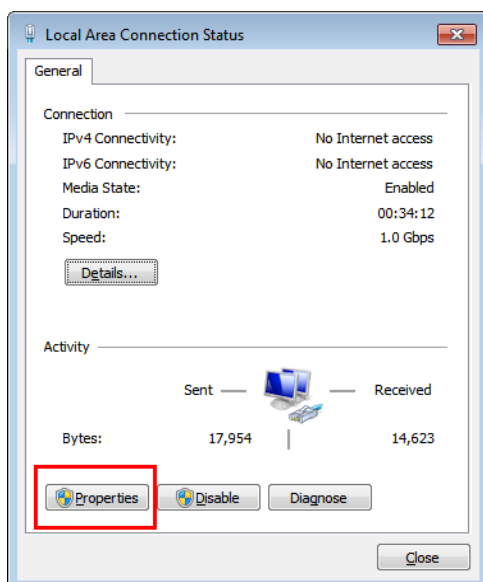
- Under Network and Internet, click **View network status and tasks**.



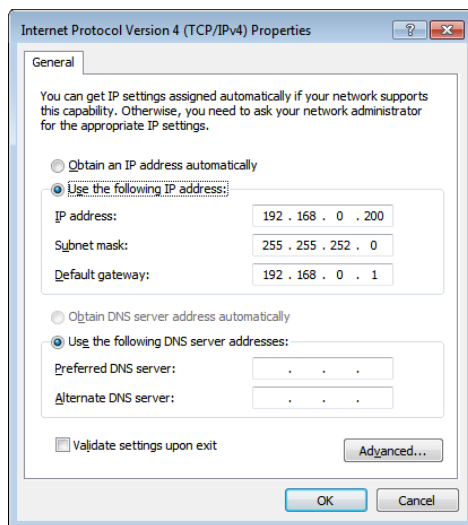
- Under Connections, select the **Local Area Connection** you want to configure.



- Select **Internet Protocol Version 4 (TCP/IPv4)**, and select **Properties**.



6. Select **Use the following IP address** and type the new IP information in the fields. Or select **Obtain an IP address automatically** to enable dynamic IP address.



7. Click **OK** to finish the setting.



## 2.6 Exiting to Windows

The unit is protected by GV-Desktop that is limited to run the selected programs. If you need to exit to Windows desktop, follow the steps below.

1. On the GV-Desktop, click the **Settings** button, and type the valid ID and password. The default ID and Password are “0000”. The Settings dialog box appears.
2. Under Desktop Type, select **Windows** from the drop-down list, and click **OK**.
3. Click the **Log Off** button, and type the ID and Password to display the Windows desktop.



## 3. Accessing GV-Mobile NVR System

### 3.1 Main Screen

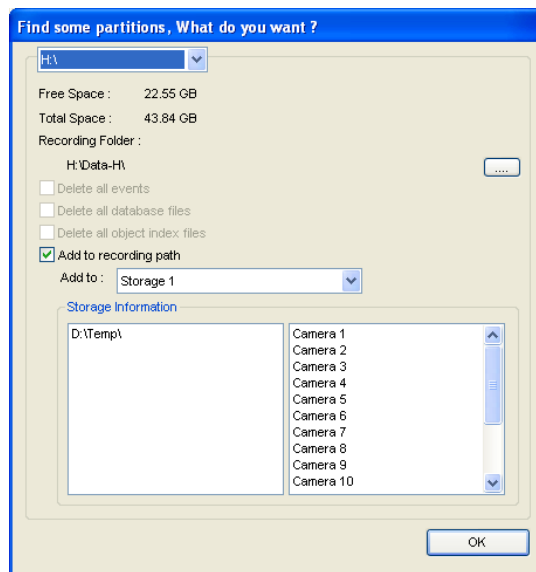


- |   |   |
|---|---|
| 1. Logout / Exit / Minimize             | 8. Start/stop screen rotation                 |
| 2. Select screen divisions              | 9. Access remote applications                 |
| 3. Select a camera for full screen mode | 10. Camera Name                               |
| 4. Start/stop recording                 | 11. Date / Time / Storage Space               |
| 5. Set up recording schedules           | 12. Status indicators for remote applications |
| 6. Access system settings               | 13. Click to call up PTZ Control Panel        |
| 7. Access ViewLog to play back video    | 14. Click to call up I/O Control Panel        |

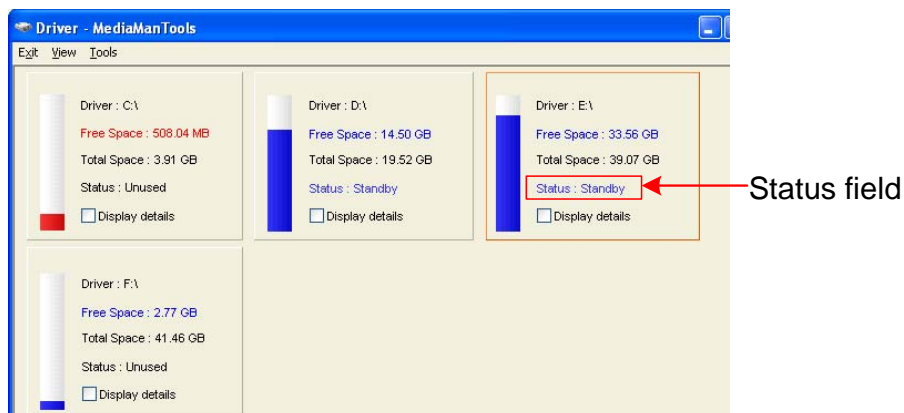
### 3.1.1 Adding a Storage Drive to the Recording Path

Before recording, you need to add the formatted storage drive to the recording path.

1. On the GV-Desktop, click the **Programs** button and select **Hot Swap HDD Tool**.
2. If a storage drive is already inserted, right-click it in the MediaMan Tools window, select **Add for recording** and select the storage group from the drop-down list.
3. If a storage drive is not inserted, follow the steps below.
  - A. Insert a HDD / SSD to the GV-Mobile NVR System. This dialog box appears.




- B. Click **Add to recording path** and select the storage group from the drop-down list.
4. Click **OK** to automatically configure the storage drive to the recording path.
5. In the MediaMan Tools window, if a storage drive is successfully added to store data, its Status field should display "Standby".

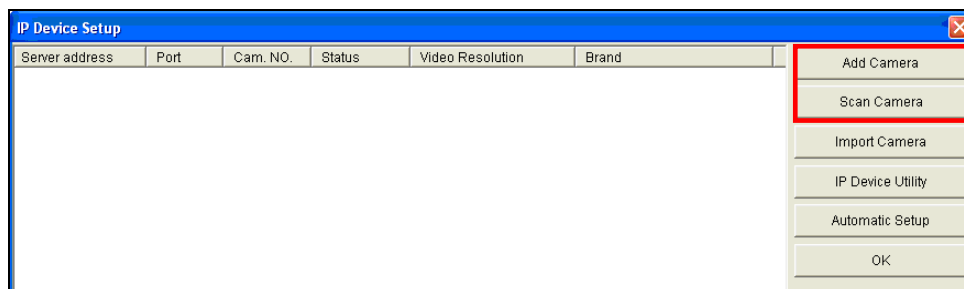


6. To add another formatted storage drive, repeat the above steps.

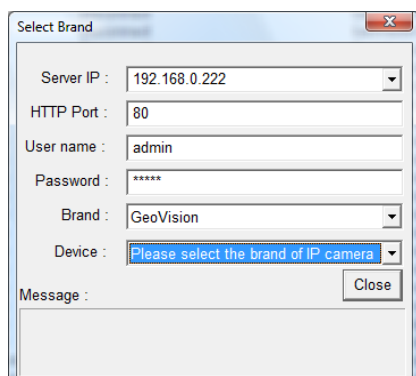
### 3.1.2 Adding IP Cameras

The following instructions are the setup procedure for adding an IP camera in the system.

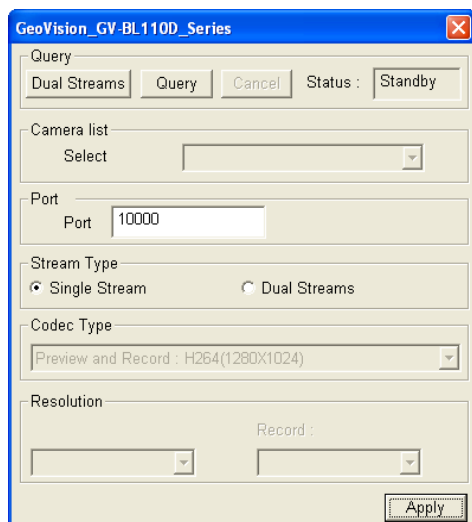
1. On the main screen, click the **Configure** button , select **System Configure** and click **IP Camera Install**.
2. To automatically add an IP camera on the LAN, click **Scan Camera**. To manually set up an IP camera, click **Add Camera** and follow the steps below.



3. Type the IP address, username and password of the IP camera. Keep the default HTTP port 80 or modify if necessary.

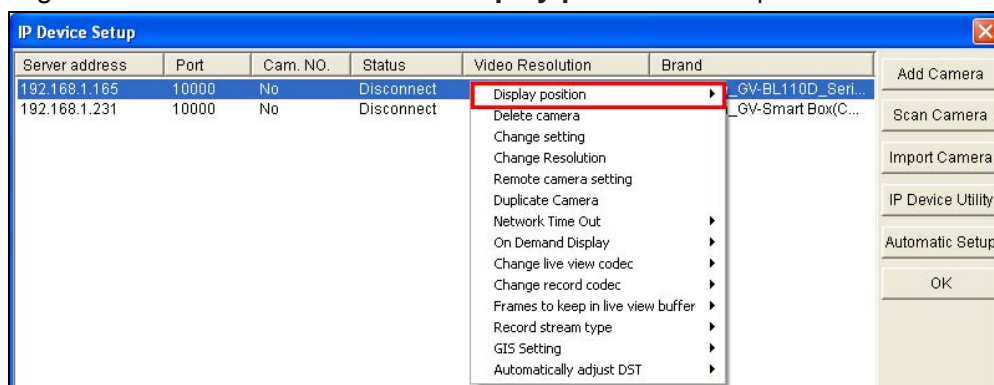


4. Select a camera brand and model from the **Brand** and **Device** drop-down lists respectively. This dialog box appears.




5. The options in the dialog box may vary depending on camera brands.

- **Dual Streams:** Click the button to apply the default codec and resolution of the GV-IP camera.
  - **Query:** Use the current codec and resolution setting on the GV-IP camera.
  - **Camera list:** Select a camera number.
  - **Port:** Keep or modify the default video streaming port 10000.
  - **Stream Type:** You may have the option of single or dual streaming depending on camera models.
  - **Codec Type:** You may have different codec options depending on camera models. If the selected camera supports dual streaming, the preview codec and recording codec can be set differently.
  - **Resolution:** Select the resolutions for preview and recording.
6. Click **Apply**. The IP camera is added to the list.
  7. Right-click the camera and select **Display position** to map the camera to a channel.




8. The Status column now should display **Connected**. Click **OK**.

### 3.1.3 Renaming the Camera

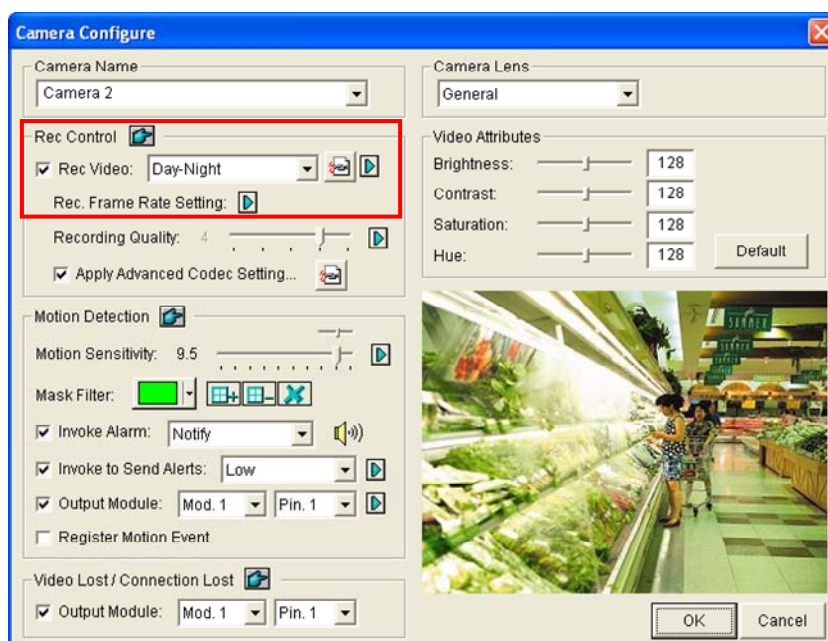
1. Click  on the main screen, click **System Configure** and select **Camera Configure**.
2. In the Camera Name field, type a new name for the camera.
3. Click **OK**.

### 3.1.4 Choosing Recording Mode

You can set each camera's recording mode individually for Motion Detection, Round-the-Clock or Day-Night.


1. Click  on the main screen, click **System Configure** and select **Camera Configure**.
2. From the Camera Name drop-down list, select one camera.
3. In the Rec Control field, click **Rec Video** and use the drop-down list to select **Motion Detect**, **Round-the-Clock** or **Day-Night**.
4. If you select **Day-Night**, click the **Arrow** button after the Rec Video option to set up time frames.
5. Click **OK**.

For details on setting camera properties, refer to *Adjusting Individual Camera*, Chapter 1, *Multicam Digital Surveillance System User's Manual* (GV-Desktop > **Program** button > **User Manual**).

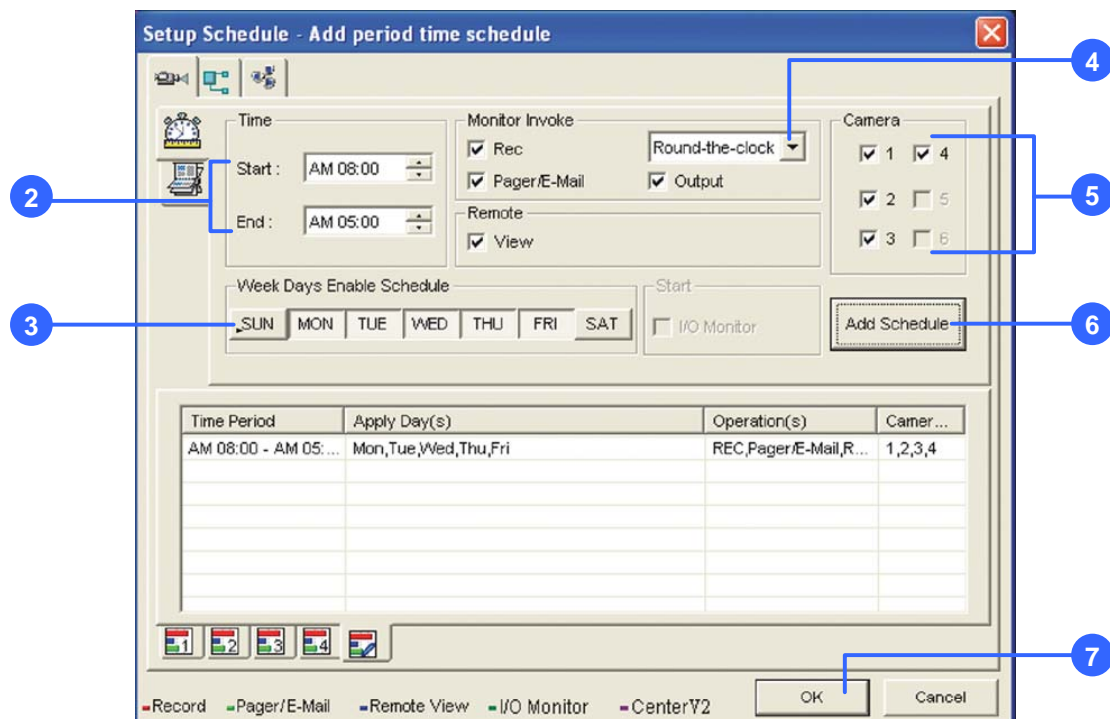


## 3.2 Setting up a Recording Schedule

You can program recording to turn on and off at a specific time each day.

1. Click  on the main screen, and select **Schedule Edit**.
2. Select or enter the Start and End time of the schedule.
3. Select day(s).
4. Select **Rec** and use the drop-down list to select **Round-the-Clock** or **Motion Detect** for recording mode.
5. Select camera(s).
6. Click **Add Schedule**.
7. Click **OK**.



For details, refer to *Recording Schedule*, Chapter 1, *Multicam Digital Surveillance System User's Manual* (GV-Desktop > **Program** button > **User Manual**).





### 3.3 Playing Back Video

You can play back video recorded during a particular date and time.

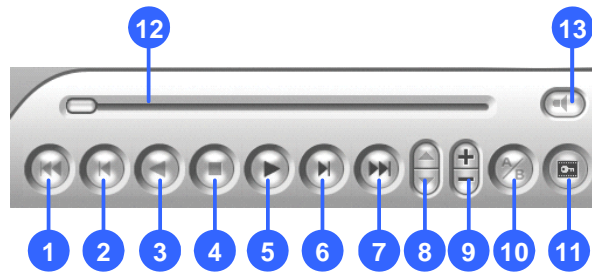
1. Click  on the main screen, and select **Video/Audio Log**.
2. Select the camera you wish to view.
3. Select a date folder from the date tree.
4. Select a time from the Video Events list.
5. Click  to begin playback.

For details, refer to *Playing Back on ViewLog*, Chapter 4, *Multicam Digital Surveillance System User's Manual* (GV-Desktop > **Program** button > **User Manual**).





### 3.3.1 Playback Controls





No.	Description	No.	Description
1	Rewind to Beginning	8	Speed up/down
2	Frame-by-Frame Reverse	9	Zoom in/out
3	Rewind	10	A to B Playback
4	Stop	11	Frame-by-Frame / Real Time Playback
5	Play	12	Playback Scroll
6	Frame-by-Frame Forward	13	Audio on/off
7	Forward to End		

### Using the Zoom

- **Zoom in:** Click the **Zoom-in** button, and then click on the area you want to magnify. Each click will increase the zoom level.
- **Zoom out:** Click the **Zoom-out** button, and then click on the image to zoom out. Each click will decrease the zoom level.

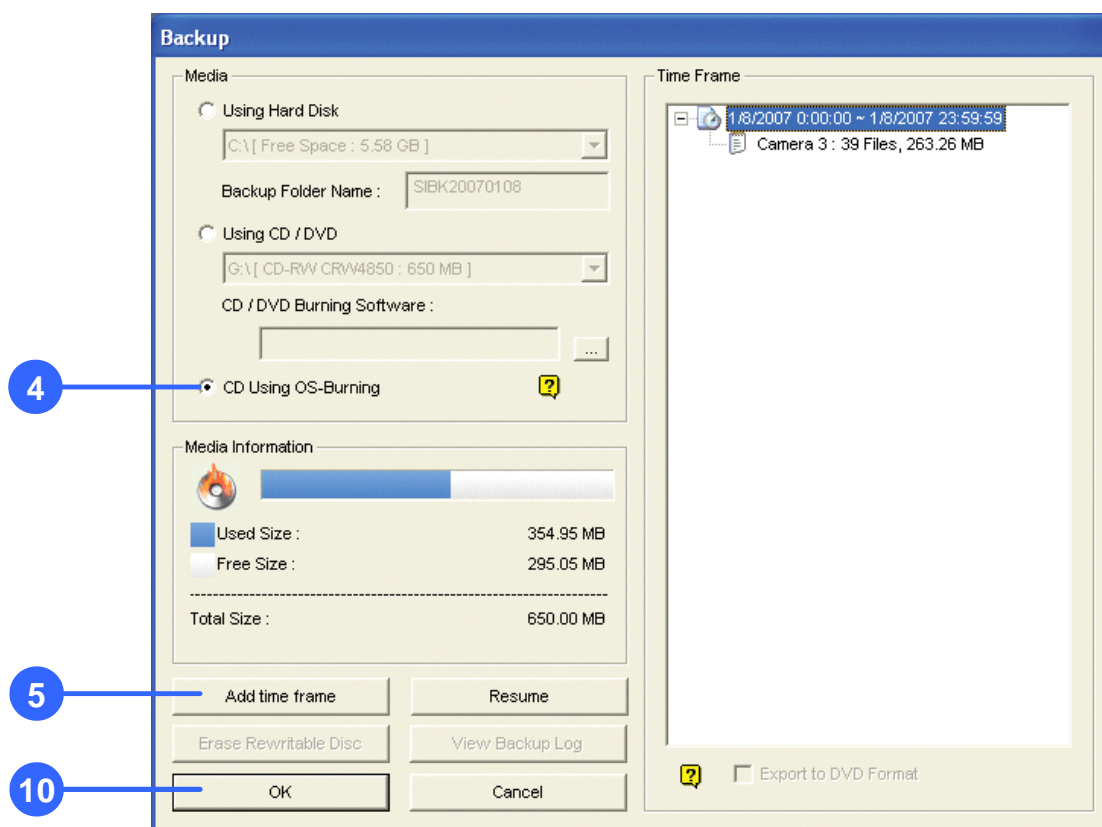
## 3.4 Backing Up Video Files

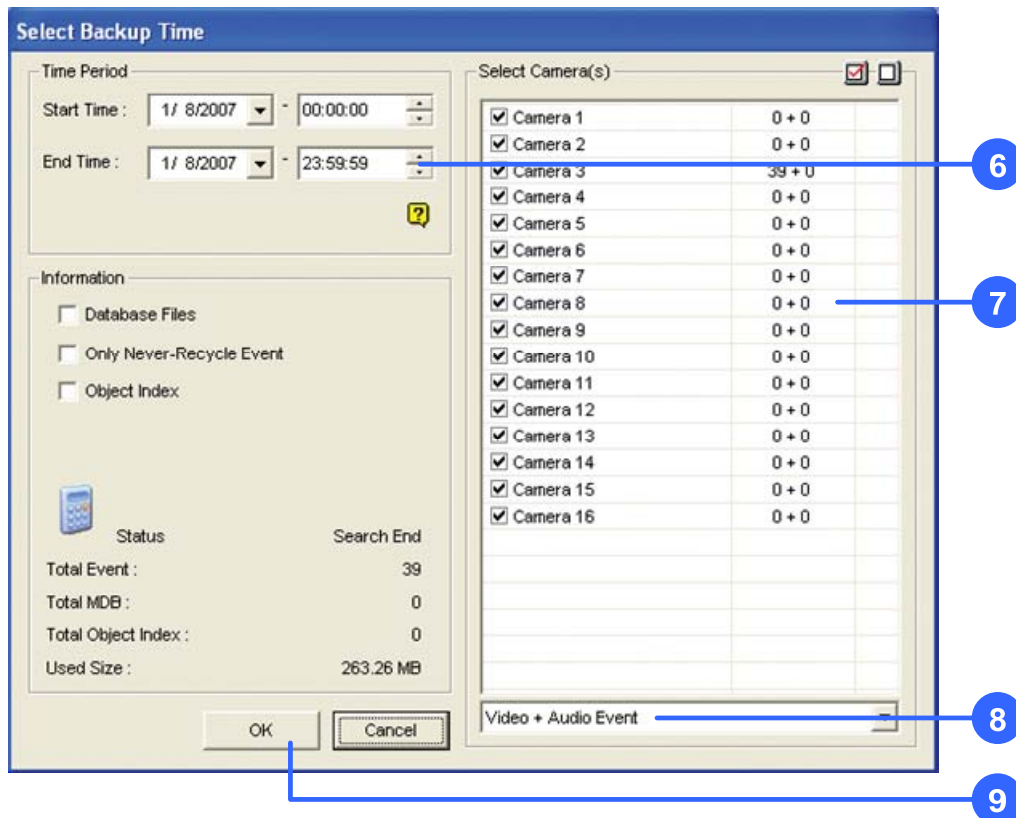
You can back up video files of the desired time to CD / DVD.

1. Insert the CD / DVD media into the drive.
2. Click  on the main screen, and select **Video/Audio Log**.
3. Click  on the functional panel.
4. Select **CD Using OS-Burning** to burn files with the inbuilt software of Windows.
5. Click **Add time frame**.

6. Enter the Start Time and End Time for backup.
7. Select the desired camera(s) for backup. The number of video and audio files of each camera is indicated respectively, e.g. "Camera 3 39+0" means the camera 3 has 39 video files and 0 audio file.
8. Select the types of events for backup, e.g. video, audio or both together.
9. Click **OK** to add the time frame. You can repeat steps 5-8 to create up to 10 time frames.
10. Click **OK** to start burning.

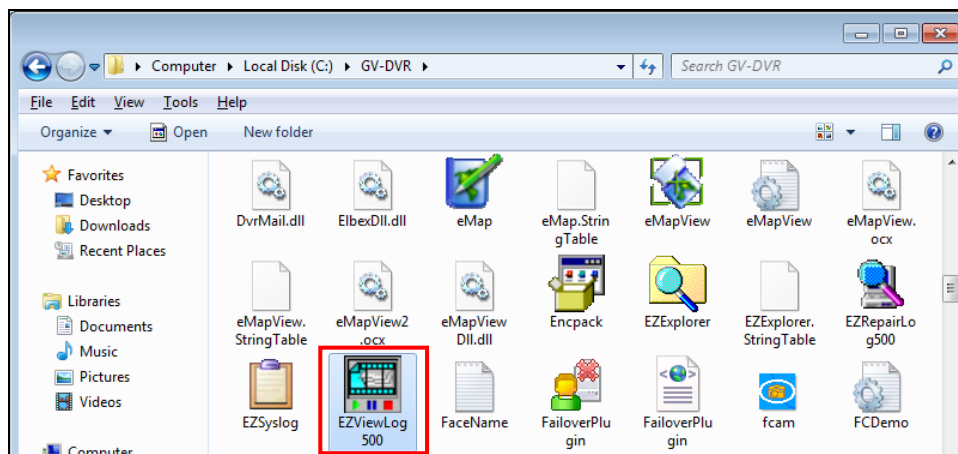
For details, refer to *Backing Up Video Files Using ViewLog*, Chapter 5, *Multicam Digital Surveillance System User's Manual* (GV-Desktop > **Program** button > **User Manual**).





### 3.4.1 Playing Backup Files

Open the backup folder, run **EZViewLog500.exe**, and then follow the instructions in the Play Back Video section.

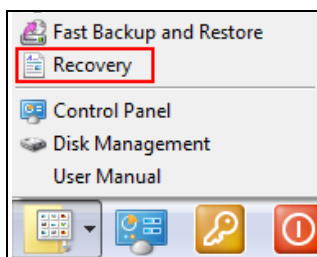


## 4. System Restoration

You can restore preinstalled files once they are damaged by running the recovery from the hidden partition. To restore the operating system and all preinstalled software, follow the steps below.

**Note:** After recovery, you need to re-install all settings and passwords. But the recovery will not delete your recording files saved on the GV-Mobile NVR System since it only reformats the partition C and all of your files are still stored on other partitions.

1. On the GV-Desktop, click the **Program** button and select **Recovery**. The system will run this command by itself.



2. Restart the GV-Mobile NVR System.
3. Press **F11** button several times to avoid accessing the system.
4. When the below screen appears, press the **Recovery** button.



5. When the restoring process is completed, the screen will automatically show the GV-Desktop, and the system will restore the default values.